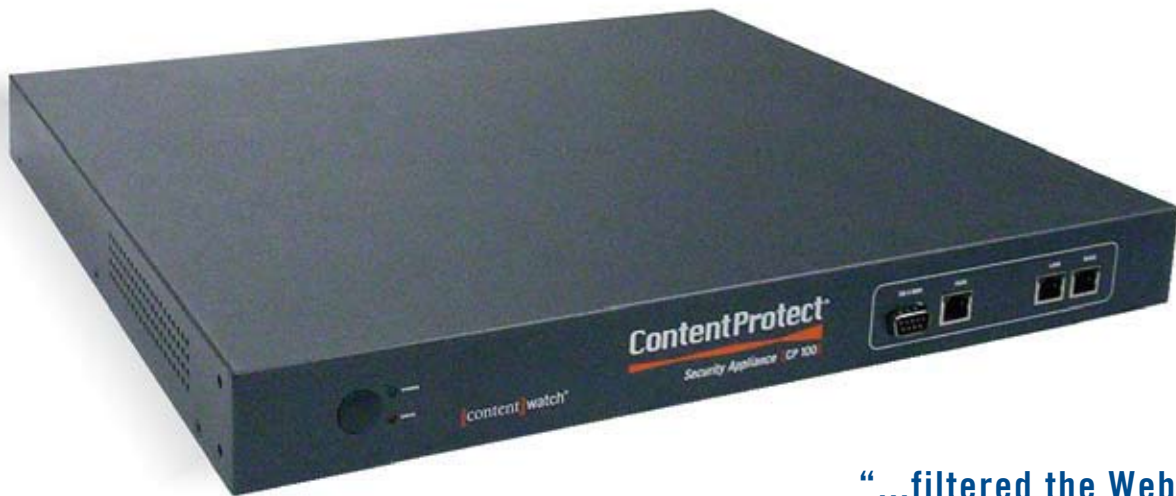


Web Content Filtering and Bandwidth Management



“...filtered the Web better than all the others.”

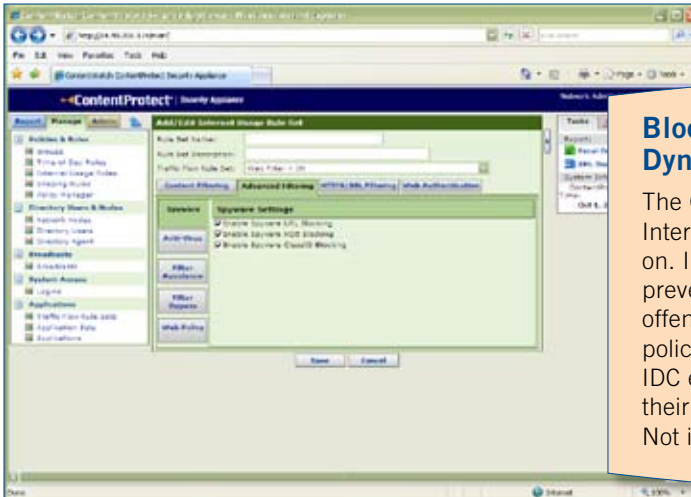
—Government Computer News

ContentProtect®
Security Appliance

No longer do you have to choose between high performance and value, thanks to the introduction of the ContentProtect Security Appliance. This new device combines the function of multiple boxes—content filtering, bandwidth shaping, IM/P2P, and anti-virus/anti-spyware—into one affordable plug-and-play box.

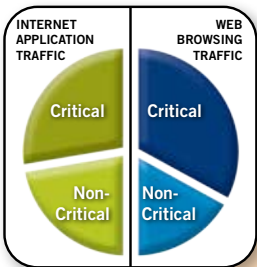
The ContentProtect Security Appliance is a powerful gateway device containing all the tools you need to manage, optimize and monitor everything that is happening within your network. With the ContentProtect Security Appliance, you

have the power to proactively protect your network from abuse and attack while simultaneously maximizing the precious bandwidth you depend on. Solve your network's biggest issues before they get out of hand—irresponsible users, spyware, slow Internet and more.



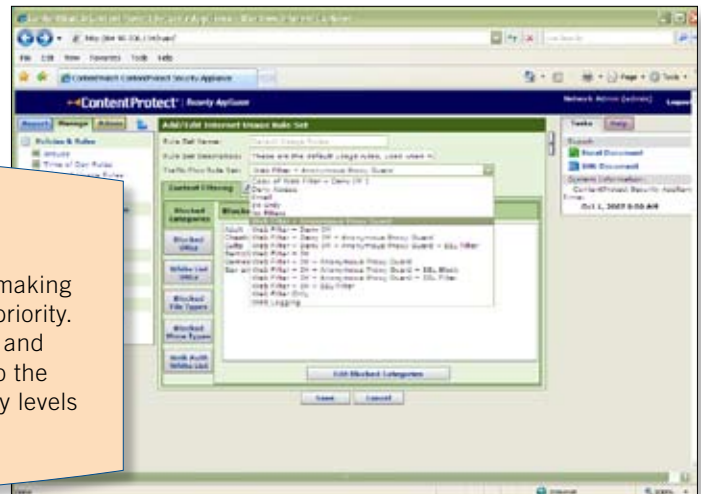
Block the Enemy: Dynamic Content Filtering

The ContentProtect Security Appliance features the dynamic Internet filtering approach the ContentProtect name was built on. Increase productivity and avoid potential legal liability by preventing employees from accessing non-work related and offensive material. Drag and drop users into your custom policy categories to enforce your company's Internet rules. IDC estimates that the average worker spends 30–40% of their day cruising the Internet on non-work related activities. Not in your network, not with this device.



Protect Your Lifeblood: Bandwidth Optimization

Resources are limited, and your job is making sure critical processes get the highest priority. The goal is to keep your data stream as clean and clear as possible. Break down usage history to the individual user, create rules and assign priority levels based on user or application—all in real time.



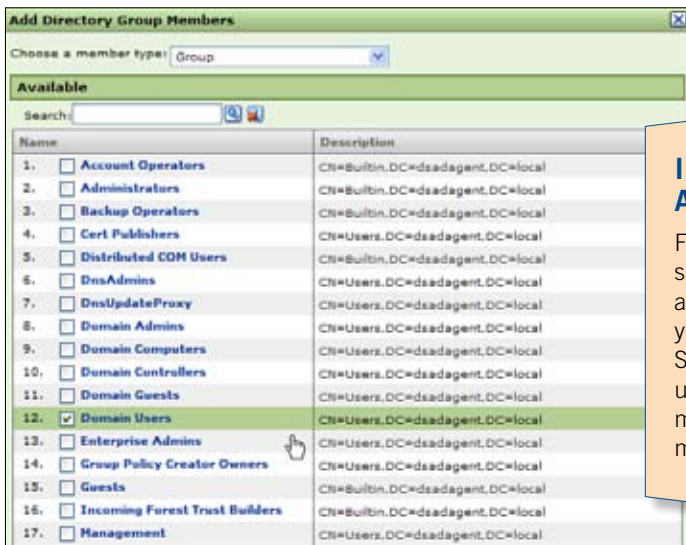
Show You're in Charge: QoS, Automated Reports

Create custom reports that go out to select groups in your company. Show HR who's been wasting time or violating policy. Let the executive team see exactly what a great job you've done keeping your bandwidth optimized. Reports compile information in easy-to-read charts and graphs and can be sent in several formats, including XML, PDF and Excel.

The Command Center: Control It All Through a Simple Interface

You don't have time to click through multiple applications or elaborate interfaces. The ContentProtect Security Appliance simplifies complex information into straightforward graphs and links. Drill down into application and user information in seconds.

Protect your network while

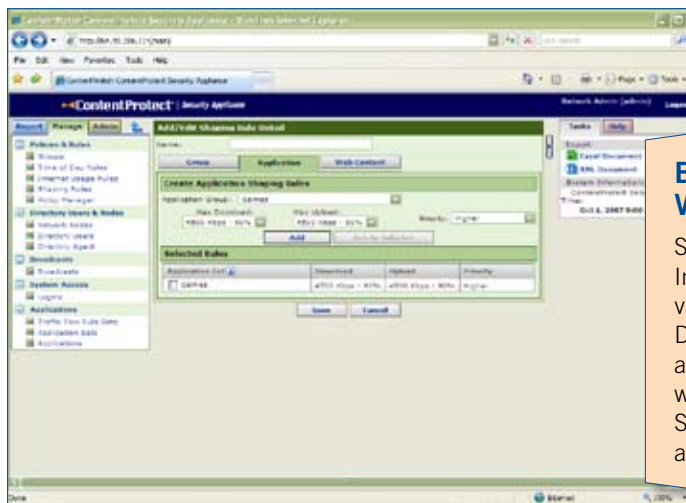


Improve Accuracy: Active Directory Synchronization

Full synchronization makes it easy to manage policies saving administrators time and improving policy application accuracy. Full synchronization between your Active Directory server and your ContentProtect Security Appliance for security groups, organization units, attributes, custom LDAP search queries and multiple domains. Single-location group and attribute management.

Stop the Hackers: Filter Avoidance Security

These industry-leading approaches eliminate the time and effort normally required to keep anonymous proxy lists up-to-date. Administrators are ensured that filter bypass technologies are updated with the latest signatures so that users don't bypass the filter. Active filter avoidance technology seeks out filter bypass methods and categorizes them automatically. Enhanced logic for referral URLs considers the attributes of referring pages when categorizing filter avoidance resources.



Be Invincible: Spyware, Viruses Can No Longer Hurt You

Spyware and viruses are the eternal plague of the Internet. They penetrate your infrastructure through various channels—email, web sites, downloaded files. Discover the source of infections, including the user, and block it forever. It's unlikely that a virus or spyware will ever get through because the ContentProtect Security Appliance employs the latest anti-spyware and anti-virus technology to stay up to date on new threats.

The ContentProtect Security Appliance sits at your gateway, monitoring everything going in and out in real time—without slowing down throughput. It lets you take proactive steps to block problems before they happen, saving time, money and stress. With the ContentProtect Security Appliance, you have actionable network analytics at your fingertips:

- **Dynamic Content Filtering:** Move beyond “black list” and “white list” filtering to identify and block objectionable material as it occurs within any web page
- **Bandwidth Management:** Maximize your resources to ensure the best performance
- **Spyware:** See where it’s coming from, who’s catching it, and neutralize the threat
- **Slow Internet:** Discover the problem, down to the individual user
- **Bandwidth Abuse:** See who’s hogging it, and what they’re using
- **Web Activity:** See who’s visiting what sites when, and what they’re doing on them
- **Peer-to-Peer:** Find out what P2P apps are doing to your network
- **Instant Messaging:** Know who’s talking, and what they’re saying
- **Viruses:** Prevent viruses, including those in web-based emails, from harming your network
- **Quality of Service Reporting:** Eliminate surprises and show management you’re in charge by alerting them to threats and problems through automated reports
- **Anonymous Proxies:** Prevent users from bypassing your filters and safeguards
- **Directory Synchronization:** Full synchronization between your Active Directory server ContentProtect Security Appliance for security groups, organization units, attributes, custom LDAP search queries, and multiple domains
- **Filter Avoidance Security:** Active filter avoidance technology seeks out filter bypass methods and categorizes them automatically

The ContentProtect Security Appliance is the perfect network management solution that scales to any size organization and supports multi-platform environments.

Call today for a quote or to sign up for a webinar.

Model	Bandwidth/Throughput	Network Nodes	Hardware Size
CP 100	2 Mbps Total Traffic	250	1U
CP 200	5 Mbps Total Traffic	350	1U
CP 300	8 Mbps Total Traffic	5,000	1U
CP 350*	20 Mbps Total Traffic	50,000	2U
CP 450*	50 Mbps Total Traffic	50,000	2U
CP 550*	100 Mbps Total Traffic	50,000	2U
CP 650*	200 Mbps Total Traffic	50,000	2U

*can be enabled for SSL acceleration

Management: Web GUI, SSH/Telnet, Console Port
 Browser: IE 6.0 or higher
 Interface: 10/100/1000 RJ45--2 Ports
 Ports: Male DB-9 RS232--1; RJ45 10/100--1
 Device: DB-9 Console Port; HyperTerminal RJ45

